

APPENDICES

GENERAL

TABLE I

Area and Population—Urban and Rural—of Hassan district as in 1961.

Sl. No.	Taluk	Area in		Population in 1961	Density		Population in 1951	Percentage increase/ decrease over 1951	
		square kilometres	square miles		Per square mile	Per square kilometre			
1	2	3	4	5	6	7	8	9	
1.	Alur	..	446.87	172.54	49,182	298	115	33,380	+47.33
2.	Arkalgud	..	679.51	262.36	1,06,786	406	157	85,739	+24.55
3.	Arsikere	..	1,286.88	496.87	1,67,806	337	130	1,40,687	+19.28
4.	Behur	..	836.10	322.82	1,02,769	304	117	70,487	+45.80
5.	Channarayapatna	..	1,042.26	402.42	1,40,679	350	135	1,19,675	+17.55
6.	Hassan	..	904.91	349.39	1,61,763	442	171	1,32,447	+22.13
7.	Holenarsipur	..	602.43	232.60	89,340	354	136	79,322	+12.63
8.	Sakleshpur	..	1,027.19	396.60	77,522	196	76	53,398	+45.18
	Total	..	6,826.15*	2,635.60*	8,95,847	334	129	7,15,135	+25.27

* These figures are according to the Survey of India. But the reporting area of the district for land utilisation purposes as worked out by the State Survey Department was 6,940.4 square kilometres or 2,679.7 square miles. This slight difference is due to the different methods employed in measuring the area (See also Chapter I).

TABLE II

Taluks in Hassan district classified by population in 1961 with variations since 1901.

<i>Taluk</i>		<i>Year</i>	<i>Persons</i>	<i>Variation</i>	<i>Males</i>	<i>Variation</i>	<i>Females</i>	<i>Variation</i>
1		2	3	4	5	6	7	8
1. Alur	..	1901	43,001	..	21,551	..	21,450	..
		1911	39,803	-3,198	19,801	-1,750	29,002	+1,448
		1921	38,640	-1,163	19,420	-381	19,220	-782
		1931	34,976	-3,664	17,850	-1,570	17,126	-2,094
		1941	31,586	-3,390	16,500	-1,350	15,086	-2,040
		1951	33,380	+1,794	17,231	+731	16,149	+1,063
		1961	49,182	+15,802	25,150	+7,919	24,032	+7,883
2. Arkalgud	..	1901	76,775	..	37,907	..	38,868	..
		1911	81,663	+4,888	40,359	+2,452	41,304	+2,436
		1921	79,493	-2,170	39,678	-681	39,815	-1,489
		1931	74,289	-5,204	37,303	-2,375	36,986	-2,829
		1941	75,186	+897	37,747	+444	37,439	+453
		1951	85,739	+10,553	43,070	+5,323	42,669	+5,230
		1961	1,06,786	+21,047	53,617	+10,547	53,169	+10,500
3. Arsikere	..	1901	79,588	..	40,195	..	39,393	..
		1911	86,251	+6,663	43,136	+2,941	43,115	+3,722
		1921	93,390	+7,139	47,294	+4,158	46,096	+2,981

Table II--(contd.)

1	2	3	4	5	6	7	8
	1931	1,07,841	+14,451	54,584	+7,290	53,257	+7,161
	1941	1,18,081	+10,240	59,728	+5,144	58,353	+5,096
	1951	1,40,687	+22,606	71,637	+11,909	69,050	+10,697
	1961	1,67,806	+27,119	85,837	+14,200	81,969	+12,919
4. Belur	..	1901	76,320	..	38,805	..	37,515
		1911	70,940	-5,380	35,990	-2,815	34,950
		1921	68,766	-2,174	34,913	-1,077	33,853
		1931	65,576	-3,190	33,752	-1,161	31,824
		1941	65,143	-433	33,472	-280	31,671
		1951	70,487	+5,344	36,508	+3,036	33,979
		1961	1,02,769	+32,282	53,456	+16,948	49,313
5. Channarayapatna	..	1901	90,950	..	43,594	..	47,356
		1911	95,032	+4,082	45,447	+1,853	49,585
		1921	93,500	-1,532	45,159	-288	48,341
		1931	1,01,468	+7,968	49,106	+3,947	52,362
		1941	1,10,545	+9,077	53,995	+4,889	56,550
		1951	1,19,675	+9,130	58,652	+4,657	61,023
		1961	1,40,679	+21,004	68,869	+10,217	71,810
6. Hassan	..	1901	94,532	..	46,103	..	48,429
		1911	96,774	+2,242	47,215	+1,112	49,559
		1921	99,814	+3,040	49,516	+2,301	50,298

Table II—(concl'd.)

1	2	3	4	5	6	7	8
	1931	1,01,998	+2,184	50,794	+1,278	51,204	+906
	1941	1,12,206	+10,208	56,402	+5,608	55,804	+4,600
	1951	1,32,447	+20,241	66,739	+10,337	65,708	+9,904
	1961	1,61,763	+29,316	81,993	+15,254	79,770	+14,062
7. Holenarsipur	1901	57,149	..	28,068	..	29,081	..
	1911	64,367	+7,218	31,571	+3,503	32,796	+3,715
	1921	64,032	-335	31,949	+378	32,083	+713
	1931	66,489	+2,457	33,046	+1,097	33,443	+1,360
	1941	71,206	+4,717	35,853	+2,807	35,353	+1,610
	1951	79,322	+8,116	39,806	+3,953	39,516	+4,163
	1961	89,340	+10,018	44,676	+4,870	44,664	+5,148
8. Sakleshpur	1901	50,604	..	26,820	..	23,784	..
	1911	43,267	-7,337	22,850	-3,970	20,417	-3,367
	1921	44,115	+848	23,232	+382	20,883	+466
	1931	44,300	+185	24,311	+1,079	19,989	-894
	1941	43,765	-535	23,816	-495	19,949	-40
	1951	53,398	+9,633	29,406	+5,590	23,992	+4,043
	1961	77,522	+24,124	41,457	+12,051	36,065	+12,073

TABLE III

Towns and Town-groups in Hassan district classified by population in 1961 with variations since 1901

<i>Name of Town</i>	<i>Year</i>	<i>Persons</i>	<i>Decade variation</i>	<i>Percentage decade variation</i>	<i>Males</i>	<i>Females</i>
1	2	3	4	5	6	7
1. Hassan	1901	8,241	4,102	4,139
	1911	7,461	-780	-9.46	3,717	3,744
	1921	8,096	+635	+8.51	4,268	3,828
	1931	10,544	+2,448	+30.24	5,468	5,076
	1941	14,596	+4,052	+38.43	7,558	7,038
	1951	24,869	+10,273	+70.38	13,100	11,769
	1961	32,172	+7,303	+29.37	17,060	15,112
2. Arsikere	1901	3,565	2,040	1,525
	1911	3,685	+120	+3.37	1,974	1,711
	1921	4,723	+1,038	+28.17	2,832	1,891
	1931	6,611	+1,888	+39.97	3,717	2,894
	1941	7,051	+440	+6.66	3,761	3,290
	1951	14,390	+7,339	+104.08	7,793	6,597
	1961	15,961	+1,571	+10.92	8,608	7,353
3. Lakshmipur (Sanitary Board) ..	1961	1,060	538	522

Table III—(contd.)

1	2	3	4	5	6	7
4. Holenarsipur	1901	6,256	3,100	3,156
	1911	6,862	+606	+9.69	3,349	3,513
	1921	6,679	-183	-2.67	3,447	3,232
	1931	8,238	+1,559	+23.34	4,166	4,072
	1941	9,303	+1,065	+12.93	4,699	4,604
	1951	12,514	+3,211	+34.52	6,387	6,127
	1961	13,590	+1,076	+8.60	6,760	6,830
5. Sakleshpur	1901	2,140	1,229	911
	1911	804	-1,336	-62.43	460	344
	1921	2,270	+1,466	+182.34	1,247	1,023
	1931	2,925	+655	+28.85	1,725	1,200
	1941	3,620	+695	+23.76	1,988	1,632
	1951	5,578	+1,958	+54.09	3,101	2,477
	1961	7,935	+2,357	+42.26	4,372	3,563
6. Belur	1901	3,862	1,918	1,944
	1911	2,631	-1,231	-31.87	1,308	1,323
	1921	2,859	+228	+8.67	1,422	1,437
	1931	3,278	+419	+14.66	1,664	1,614
	1941	3,703	+425	+12.97	1,927	1,776
	1951	5,708	+2,005	+54.15	3,015	2,693
	1961	7,907	+2,199	+38.52	4,138	3,769

Table III—(contd.)

1	2	3	4	5	6	7
7. Arkalgud	1901	4,903	2,417	2,486
	1911	5,060	+157	+3.20	2,538	2,522
	1921	4,458	-602	-11.90	2,321	2,137
	1931	4,908	+450	+10.09	2,481	2,427
	1941	5,091	+183	+3.73	2,539	2,552
	1951	6,275	+1,184	+23.26	3,116	3,159
	1961	7,057	+782	+12.46	3,611	3,446
8. Channarayapatna	1901	3,222	1,592	1,630
	1911	2,989	-233	-7.23	1,498	1,491
	1921	3,106	+117	+3.91	1,564	1,542
	1931	3,473	+367	+11.82	1,733	1,740
	1941	4,134	+661	+19.03	2,082	2,052
	1951	5,783	+1,649	+39.89	2,997	2,786
	1961	6,913	+1,130	+19.54	3,651	3,262
9. Konanur	1901	2,328	1,171	1,157
	1911	De-classified
	1921	De-classified
	1931	2,637	1,458	1,179
	1941	2,981	+344	+13.05	1,498	1,483
	1951	3,734	+753	+25.26	1,943	1,791
	1961	4,994	+1,260	+33.74	2,599	2,395

Table III—(concl'd.)

1	2	3	4	5	6	7
10. Banavara	1901	2,422	1,218	1,204
	1911	De-classified
	1921	De-classified
	1931	3,127	1,627	1,500
	1941	2,462	-665	-21.27	1,297	1,165
	1951	3,131	+669	+27.17	1,622	1,509
	1961	3,594	+463	+14.79	1,820	1,774
11. Shravanabelgola	1901	1,926	909	1,017
	1911	De-classified
	1921	1,923	952	971
	1931	2,371	+448	+23.30	1,197	1,174
	1941	2,709	+338	+14.26	1,396	1,313
	1951	2,910	+201	+ 7.42	1,442	1,468
	1961	3,231	+321	+11.03	1,617	1,614
12. Alur	1901	1,299	665	634
	1911	988	-311	-23.94	522	466
	1921	1,984	+996	+100.81	1,009	975
	1931	1,996	+ 12	+0.60	1,041	955
	1941	2,133	+137	+6.86	1,126	1,007
	1951	2,504	+371	+17.39	1,275	1,229
	1961	3,122	+618	+24.68	1,613	1,509

TABLE IV

Occupational classification of persons at work (other than cultivation) in Hassan district as in 1961

<i>Sl. No.</i>	<i>Occupations</i>	<i>Males</i>	<i>Females</i>	<i>Total</i>
1	2	3	4	5
1.	Engineers, Architects and Surveyors	252	..	252
2.	Physicians, Surgeons and Dentists	184	16	200
3.	Nurses, Pharmacists and other Medical and Health Technicians	298	190	488
4.	Teachers	3,315	466	3,781
5.	Jurists (including Legal Practitioners and Legal Advisors)	132	..	132
6.	Artists, Writers and related workers	230	25	255
7.	Administrative, Executive and Managerial workers (both Government and private)	2,343	99	2,442
8.	Clerical and related workers (including Stenographers, Typists, Book-keepers, Cashiers, etc.).	3,398	124	3,522
9.	Un-skilled office-workers (including Attendants, etc.)	1,418	94	1,512
10.	Working Proprietors—wholesale and retail trade	5,575	615	6,190
11.	Salesmen, Shop-Assistants and related workers	1,375	173	1,548
12.	Farmers, Farm-workers (Animals, birds and insect rearing, Fishermen, Gardeners, Tappers, etc.)	17,993	9,878	27,871
13.	Workers in Transport and Communication occupations (including Railways, Road Transport, Posts and Telegraphs, etc.).	2,041	6	2,047

Table IV—(concl'd.)

1	2	3	4	5
14.	Spinners, Weavers, Dyers and related workers	972	1,492	2,464
15.	Tailors, Cutters and related workers	2,029	399	2,428
16.	Shoe-makers, Shoe-repairers, Leather-cutters and related workers	227	11	238
17.	Blacksmiths, Furnacemen and related workers	937	90	1,027
18.	Jewellers, Goldsmiths and Silversmiths	1,289	44	1,333
19.	Tool-makers, Machinists, welders and related workers	604	20	624
20.	Electricians and related workers	504	2	506
21.	Carpenters, cabinet-makers and related workers	2,355	27	2,382
22.	Brick-layers, Plasterers, Stone-cutters and other construction workers	2,488	505	2,993
23.	Potters, Kilnmen, Clay-formers and related workers	959	547	1,506
24.	Millers, Bakers, Oilseed-pressers, Pounders and related food and beverage workers	1,900	274	2,174
25.	Basket-weavers and production process workers	483	1,096	1,579
26.	Policemen, Guards, Watchmen and related workers	738	4	742
27.	Cooks, Maids, House-keepers and related workers	1,945	439	2,384
28.	Waiters, Bar-tenders and related workers	349	26	375
29.	Cleaners, Sweepers, Watermen, Building Caretakers, etc.	565	153	718
30.	Barbers, Hair-dressers and related workers	761	28	789
31.	Washermen, Laundrymen and Dhobies	488	176	664
32.	Labourers, not classifiable by occupation	55	6	61

Source : Census of India, 1961, Vol. XI, Mysore, Part II-B(ii), General Economic Tables.

TABLE V

Livestock population in Hassan District
A—Cattle and Buffaloes as per livestock censuses of 1961 and 1966

Sl. No.	Taluk	Cattle						Buffaloes					
		1961			1966			1961			1966		
		Male	Female	Total	Male	Female	Total	Male	Female	Total	Male	Female	Total
1	2	3	4	5	6	7	8	9	10	11	12	13	14
1.	Alur ..	24,125	28,695	52,820	21,332	23,918	45,250	1,070	4,629	5,699	775	3,469	4,244
2.	Arsikere ..	49,545	49,043	98,588	47,643	50,519	98,162	3,418	19,250	22,668	2,621	13,953	16,574
3.	Arkalgud ..	25,753	50,126	75,879	23,392	45,097	68,489	2,299	13,952	16,251	1,811	11,632	13,443
4.	Belur ..	43,452	49,033	92,485	41,356	47,007	88,363	1,524	5,435	6,959	1,202	4,059	5,261
5.	Chamaraya- patna.	30,269	36,754	67,023	33,497	72,821	106,318	3,906	23,507	27,413	2,877	22,000	24,877
6.	Hassan ..	47,573	56,510	104,083	44,413	49,957	94,370	3,215	18,772	21,987	2,360	15,384	17,744
7.	Holenarsipur ..	15,895	33,753	49,648	11,900	21,845	33,745	2,811	17,532	20,343	1,251	12,890	14,141
8.	Sakleshpur ..	28,629	25,869	54,498	28,277	26,277	54,554	4,950	7,126	12,076	4,219	6,319	10,538
	Total ..	265,241	329,783	595,024	251,810	337,441	589,251	23,193	110,203	133,396	17,116	89,706	106,822

Table V—(contd.)

B—Number of other Livestock as ascertained by Livestock Censuses of 1961 and 1966

Sl. No.	Taluk	Sheep		Goats		Horses and Ponies		Mules		Donkeys		Pigs		Camels	
		1961	1966	1961	1966	1961	1966	1961	1966	1961	1966	1961	1966	1961	1966
1	2	3	4	5	6	7	8	9	10	11	12	13	14	15	16
1.	Alur ..	151	315	5,120	3,467	3	75	2	3	599	640
2.	Arsikere ..	58,322	58,917	31,603	31,687	156	442	3	..	344	148	180	897
3.	Arkalgud ..	13,861	11,791	15,426	15,238	516	424	1	..	69	47	859	942
4.	Belur ..	5,609	3,765	10,959	8,477	78	598	53	53	2,156	1,739
5.	Channarayapatna ..	86,520	82,498	27,205	21,531	166	994	800	1,019	845	829	..	1
6.	Hassan ..	41,588	39,278	13,409	10,334	127	815	..	3	331	244	1,267	1,101
7.	Holenarsipur ..	42,257	37,161	13,634	14,375	74	57	68	67	509	263
8.	Sakleshpur ..	659	606	2,353	3,837	34	203	3	1,879	1,857
	Total ..	248,967	234,331	119,709	108,946	1,154	3,608	4	3	1,667	1,584	8,294	8,268	..	1

Table V—(contd.)

C—Number of Poultry as per Livestock Census of 1961

Sl. No.	Taluk	Fowls				Ducks				Others	Total Poultry
		Hens	Cocks	Chicken	Total	Ducks	Draks	Ducklings	Total		
1	2	3	4	5	6	7	8	9	10	11	12
1.	Alur	9,298	4,668	20,595	34,561	63	77	20	160	24	34,745
2.	Arsikere	15,470	7,471	20,823	43,764	12	11	8	31	59	43,854
3.	Arkalgud	27,325	11,250	48,849	87,424	82	37	2	121	67	87,632
4.	Belur	18,071	7,238	39,744	56,053	77	62	..	139	..	56,192
5.	Channarayapatna	35,199	14,869	50,039	100,107	3	76	4	83	25	10,015
6.	Hassan	36,328	23,509	53,559	113,396	11	13	8	32	7	113,435
7.	Holenarsipur	21,000	13,499	9,290	43,789	3,125	1,877	1,084	6,086	9,750	59,625
8.	Sakleshpur	18,530	11,244	39,018	68,792	70	122	95	287	2,731	71,810
	Total	181,221	93,748	272,917	547,886	3,443	2,275	1,221	6,939	12,663	567,508

Table V—(concl'd.)

C—Number of Poultry as per Livestock Census of 1966

Sl. No.	Taluk	Fowls				Ducks				Others	Total Poultry
		Hens	Cocks	Chicken	Total	Ducks	Drakes	Ducklings	Total		
1	2	3	4	5	6	7	8	9	10	11	12
1.	Alur	7,395	3,656	14,665	25,716	83	16	2	101	..	25,817
2.	Arsikere	24,279	8,888	16,416	49,583	1,082	1,740	441	3,263	..	52,846
3.	Arkalgud	18,119	8,406	35,675	62,200	..	10	4	14	41	62,255
4.	Belur	15,551	7,065	29,832	52,448	23	27	5	55	17	52,520
5.	Channarayapatna	42,824	28,833	60,405	132,062	3	3	..	6	..	132,068
6.	Hassan	37,608	15,359	71,101	124,068	191	365	123	679	2	124,749
7.	Holenarsipur	16,106	3,992	19,322	39,420	..	2	..	2	36,109	75,531
8.	Sakleshpur	17,695	9,907	39,435	67,037	25	25	14	64	524	67,625
Total		179,577	86,106	286,851	552,534	1,407	2,188	589	9,184	36,693	593,411

TABLE VI

Statement showing the provisional (1971) figures in rural areas of the taluks in Hassan district along with final figures of 1961

Sl. No.	Taluk	1961 Population			1971 (Provisional figures)		
		Persons	Males	Females	Persons	Males	Females
1.	Alur	46,060	23,537	22,523	55,307	27,739	27,568
2.	Arkalgud	94,735	47,407	47,328	113,073	56,602	56,471
3.	Arsikere	147,191	74,871	72,320	179,785	90,610	89,175
4.	Belur	94,862	49,318	45,544	111,162	56,164	54,998
5.	Channarayapatna	130,535	63,601	66,934	156,492	76,946	79,546
6.	Hassan	129,591	64,933	64,658	163,470	82,077	81,393
7.	Holenarsipur	75,750	37,916	37,834	90,182	44,912	45,270
8.	Sakleshpur	69,587	37,085	32,502	79,993	41,636	38,357
	Total	788,311	398,668	389,643	949,464	476,686	472,778

HASSAN DISTRICT

675

Table VII

Population and growth-rates of towns in Hassan district

Sl. No.	Population classification as in 1971 (provisional)	1961			1971 (Provisional)	Growth-rate of population 1961-71 (provisional)
		Persons	Males	Females	Persons*	
Class II (50,000—99,999)						
1.	Hassan	32,172	17,060	15,112	51,329	+59.55
Class III (20,000—49,999)						
2.	Arsikere	15,961	8,608	7,253	24,145	+51.27
Class IV (10,000—19,999)						
3.	Holenarsipur	13,590	6,760	6,830	15,998	+17.72
4.	Sakleshpur	7,935	4,372	3,563	11,156	+40.66
5.	Belur	7,907	4,138	3,769	10,490	+32.67
6.	Channarayapatna	6,913	3,651	3,262	10,294	+48.91
Class V (5,000—9,999)						
7.	Arkalgud	7,057	3,611	3,446	8,733	+23.75
8.	Konanur	4,994	2,599	2,395	5,536	+10.85
Class VI (Less than 5,000)						
9.	Banavara	3,594	1,820	1,774	4,405	+22.57
10.	Alur	3,122	1,613	1,509	3,706	+18.71
11.	Shravanabelgola	3,231	1,617	1,614	3,628	+12.21

*Separate figures pertaining to males and females as in 1971 are not yet available.

TABLE VIII

Distribution of population by workers and non-workers as in 1971 (provisional figures) in Hassan district

<i>Persons</i>			<i>Total population</i>	<i>Workers</i>	<i>Non- workers</i>	<i>Percentage of workers to total population</i>	
						1961	1971
Persons	1,098,884	354,504	744,380	47.30	32.26
Males	554,700	300,490	254,210	59.00	54.17
Females	544,184	54,014	490,170	35.22	9.23

TABLE IX

Distribution of working population by agricultural and other workers as in 1971 (provisional figures) in Hassan district

Persons	Total workers	Culti-vators	Agricul-tural labourers	Workers other than cultivators and agricultural labourers	Percentage of agricultural and other workers to total population					
					Cultivators		Agricultural labourers		Workers other than cultivators and agricultural labourers	
					1961	1971	1961	1971	1961	1971
Persons ..	354,504	217,052	39,819	97,633	73.96	61.23	5.56	11.23	20.48	27.54
Males ..	300,490	196,919	29,594	73,977	70.65	65.53	5.02	9.85	24.33	24.62
Females ..	54,014	20,133	10,225	23,656	79.67	37.27	6.50	18.93	13.83	43.80

Metric Weights and Measures*Length—*

- 10 millimetres = 1 centimetre
 100 centimetres = 1 metre
 1,000 metres = 1 kilometre
 1,852 metres = 1 nautical mile (international)

Area—

- 100 square millimetres = 1 square centimetre
 10,000 square centimetres = 1 square metre or centiare
 100 square metres = 1 are
 100 ares = 1 hectare
 100 hectares or 1,000,000 square metres = 1 square kilometre

Volume—

- 1,000,000 cubic centimetres = 1 cubic metre

Capacity—

- 1,000 millilitres = 1 litre
 1,000 litres = 1 kilolitre

Weights—

- 1,000 milligrams = 1 gram
 1,000 grams = 1 kilogram
 100 kilograms = 1 quintal
 1,000 kilograms = 1 tonne
 200 milligrams = 1 carat

Conversion Factors*Length—*

- 1 inch = 2.54 centimetres
 1 foot = 30.48 centimetres
 1 yard = 91.44 centimetres
 1 mile = 1.61 kilometres
 1 nautical mile (UK) = 1,853.18 metres
 1 nautical mile (international) = 1,852 metres

Volume—

- 1 cubic foot = 0.028 cubic metre

Area—

- 1 square foot = 0.093 square metre
 1 square yard = 0.836 square metre
 1 square mile = 2.59 square kilometres
 1 acre = 0.405 hectare

Capacity—

- 1 gallon (Imperial) = 4.55 litres
 1 seer (80 tolas) = 0.937 litre
 1 Madras measure = 1.77 litres

Temperature—

- T° Fahrenheit = $\frac{9}{5}$ (T° centi grade) + 32

**Metric Weights and their nearest equivalents in F.P.S.
System and in the district of Hassan.**

Sl. No.	Weights in Metric System (1 kg. = 1,000 gms.)		Equivalents in F.P.S. System		Equivalents in the District of Hassan		
	Kgs.	Gms.	Lbs.	Ozs.	Mds.	Srs.	Tolas
1	50	..	110	3-5/8	4	18	15
2	20	..	44	1-1/2	1	31	11
3	10	..	22	3/4	0	35	17½
4	5	..	11	3/8	0	17	20-3/4
5	2	..	4	6-½	0	7	3½
6	1	..	2	3	0	3	13-3/4
7		500	1	1-3/5	0	1	19
8		200	0	7	0	0	17
9		100	0	3-1/2	0	0	8-1/2
10		50	0	1-3/4	0	0	4-1/3
11		20	0	7/10	0	0	1-3/4
12		10	0	7/20	0	0	17/20
13		5	0	7/40	0	0	2/5
14		2	0	7/100	0	0	1/6
15		1	0	7/200	0	0	1/12

Measures which were in use in Hassan district and their equivalents

		Seer	Pav	Chatak	Seer	Millilitre
2 litres	..	1	2	1/2	1	1254
1 litre	..	0	3	1/4	1/2	625
500 ml	..	0	1½	1/8	1/4	312
200 ml	..	0	½	1/2	1/8	156
100 ml	..	0	0	¼	1/16	78
50 ml	..	0	0	5/8	1/32	40
20 ml	..	0	0	1/4	1/64	20

Denominations of litre measures in use

20 litres	1 litre	50 ml
10 litres	500 ml	20 ml
5 litres	200 ml	
2 litres	100 ml	

Cylindrical-type Aluminium, Brass and Stainless Steel pouring and dipping
measures for liquids only.

G. I. Conical measures for kerosene and motor oils only.

1 gallon = 4.55 litres

1 litre = 1,000 millilitres

Weights in existence in Hassan district prior to the introduction of
Metric Weights and their equivalents.

<i>Tolas</i>	<i>Grams</i>	<i>Tolas</i>	<i>Grams</i>
1—1/2	18	13—1/2	158
3	35	15	175
4—1/2	53	16—1/2	193
6	70	18	210
7—1/2	88	19—1/2	228
9	105	21	245
10—1/2	123	22—1/2	263
12	140	24	280
<i>Seers</i>	<i>Tolas</i>	<i>Kilograms</i>	<i>Grams</i>
1	24	..	280
2	48	..	560
3	72	..	840
4	96	1.12	1,120
5	120	1.40	1,400
6	144	1.68	1,680
7	168	1.96	1,960
8	192	2.24	2,240
9	216	2.52	2,520
10	240	2.80	2,800
11	264	3.08	3,080
12	288	3.36	3,360
13	312	3.64	3,640
14	336	3.92	3,920
15	360	4.20	4,200
16	384	4.48	4,480
17	408	4.76	4,760
18	432	5.04	5,040
19	456	5.32	5,320
20	480	5.60	5,600
21	504	5.88	5,880
22	528	6.16	6,160
23	552	6.44	6,440
24	576	6.72	6,720
25	600	7.00	7,000
26	624	7.28	7,280
27	648	7.56	7,560
28	672	7.84	7,840

<i>Seers</i>	<i>Tolas</i>	<i>Kilograms</i>	<i>Grams</i>
29	696	8.12	8,120
30	720	8.40	8,400
31	744	8.68	8,680
32	768	8.96	8,960
33	792	9.24	9,240
34	816	9.52	9,520
35	840	9.80	9,800
36	864	10.08	10,080
37	888	10.36	10,360
38	912	10.64	10,640
39	936	10.92	10,920
40	960	11.20	11,200

<i>Maunds</i>	<i>Seers</i>	<i>Tolas</i>	<i>Kilograms</i>	<i>Grams</i>
1	40	960	11.2	11,200
2	80	1,920	22.4	22,400
3	120	2,880	33.6	33,600
4	160	3,840	44.8	44,800
5	200	4,800	56.0	56,000
6	240	5,760	67.2	67,200
7	280	6,720	78.4	78,400
8	320	7,680	89.6	89,600
9	360	8,640	100.8	1,00,800
10	400	9,600	112.0	1,12,000

Source : Office of the Controller of Weights and Measures, Bangalore.

SELECT BIBLIOGRAPHY

- ANANTHAKRISHNA IYER, L.K. The Mysore Tribes and Castes, Vol. I, Mysore University, Mysore, 1935.
- ARAMUTHOO IYENGAR, R... The Economic Outlook in Mysore, Madras, 1917.
- BALAKRISHNA, R. .. Industrial Development of Mysore, 1940.
- COELHO, WILLIAM .. The Hoysala Vamsa, Bombay, 1949.
- DERRETT, J. D. M. .. The Hoysalas, A Medieval Indian Royal Family, Madras, 1957.
- DESAI, P. B. (ED.) .. A History of Karnataka, Karnatak University, Dharwar, 1970.
- DESAI, P. B. .. Jainism in South India and some Jaina Epigraphs, Sholapur, 1957.
- DIWAKAR, R. R. AND OTHERS (EDS.) Karnataka through the Ages, Bangalore, 1968.
- FOOTE, R. BRUCE .. Indian Pre-historic and Proto-historic Antiquities, 1916.
- GOPALA RAO, H. G. .. Soil and Soil Fertility in Mysore State, Bangalore, 1960.
- HALAPPA, G. S. .. A History of Freedom Movement in Karnataka, Volume II, Bangalore, 1964.
- HALAPPA, G. S. (ED.) .. Studies in State Administration, Dharwar, 1963.
- HAYAVADANA RAO, C .. A History of Mysore, Vols. I to III, Bangalore, 1943-1946.
Mysore Gazetteer, Vols. I to V, 1927-1930 .
- HUKKERIKAR, R. S. AND OTHERS (EDS.) Karnataka Darshana, Bombay, 1955.
- JAVARE GOWDA, D. .. *Nanjunda Kavi*, Mysore, 1964.
- KHERA, S. S. .. District Administration in India, Bombay, 1965.
- KRISHNA RAO, M. V. .. The Gangas of Talakad, Madras, 1936.
- KRISHNA RAO, M. V. AND HALAPPA, G. S. A History of the Freedom Movement in Karnataka, Vol. I, Bangalore, 1962.
- KRISHNA RAO, M. V. AND KESHAVA BHATTA, M. *Karnataka Itihasa Darshana*, Bangalore, 1970.
- LAKSHMINARASIMHA SASTRY, NIDIGERE. *Aiguru Itihasa*, Hassan, 1936.
- LEARMONTH, A. T. A. .. A Regional Synthesis, Mysore State, Vol. II, Calcutta, 1962.

- LEARMONTH, A. T. A. AND BHAT, L. S. .. An Atlas of Resources of Mysore State, Vol. I, Calcutta, 1961.
- MUTHANNA, I. M. .. A History of Karnataka, Mysore, 1962.
- NAGE GOWDA, H. L. .. *Bettadinda Battalige*, Arsikere, 1969.
- NANDIMATH, S. C. .. *Kannada Nadina Charitre—Part II, Karnatakada Dharmagalu*, Bangalore, 1949.
- NANJUNDAPPA, D. M. .. Community Development and Employment, Dharwar, 1963.
- NANJUNDAYYA, H. V. AND ANANTHAKRISHNA IYER, L. K. .. The Mysore Tribes and Castes—Vols. II, III and IV, Mysore University, Mysore, 1928, 1930 and 1931.
- PRAKASA RAO, V. L. S. .. Towns of Mysore State, Calcutta, 1964.
- NILAKANTA SASTRI, K. A. .. A History of South India from Pre-historic Times to the Fall of Vijayanagar, Bombay, 1966.
- RAMAIYA, P. R. .. Mysore's Political Evolution, Bangalore, 1961.
- RAMESH, B. H. .. *Arsikere Bedagu*, Arsikere, 1968.
- RICE, B. LEWIS .. *Mysore Gazetteer*, Vols. I and II, Bangalore, 1897.
- SALETORÉ, B.A. AND DESAI, P. B. .. *Kannada Nadina Charitre*, Part I, Bangalore, 1941.
- SAMBASHIVA IYER, V. S... Resources, Industries, Trade and Commerce of the Mysore State, 1914.
- SESHADRI, M. .. The Stone-using Cultures of Pre-historic and Proto-historic Mysore, London, 1956.
- SHAMA RAO, M. .. Modern Mysore, Vols. I and II, Bangalore, 1936.
- SHARMA, L.T. AND SRIDHAR, B.H. .. *Banavasiya Kadambaru*, Banavasi, 1966.
- SHARMA, T. T. .. *Karnatakadalli Swatantrya Sangrama*, Bangalore, 1957.
- SRIKANTHA SHASTRY, S. .. *Hoysala Vasthushilpa*, Mysore University, Mysore, 1965.
Sources of Karnataka History, Mysore.
- SRINIVAS, M. N. .. Marriage and Family in Mysore, Bombay, 1942.
- SWAMY, G. L. .. *Hassan District Kaipidi*, 1937.
- SWAMI GOWDA .. *Hassana Jilleya Kannada Sahitya Koduge*, Hassan, 1968.

- THIPPERUDRASWAMY, H. .. *Karnataka Samskriti Sameekshe*,
Mysore, 1968.
- VENKATESHWARAN, P. A. *Agriculture in South India*, New
Delhi, 1961.
- WILKS, LT. COL. MARK .. *History of Mysore, Vols. I and II*
(Edited with notes by Murray
Hammick, Mysore), 1930.

All-India Rural Credit Survey—District Monograph, Hassan District,
Bombay, 1959.

Annual Reports of the Mysore Archaeological Department, 1926-
1946 and 1947-1956.

Census Hand-Books, Hassan District, 1951 and 1961.

Census of India, 1961, Mysore, General Population Tables.

Census of India, Paper No. 1 of 1962, 1961 Census.

Census of India, 1961, Social and Cultural Tables.

Census of India, 1961, Vol. XI, Mysore, Part V-A, Special Tables on
Scheduled Castes and Scheduled Tribes, Delhi, 1966.

Census of India, 1961, Vol. XI, Mysore, Part II-B, General Economic
Tables, Delhi, 1965.

Census of India, 1961, Vol. XI, Mysore, Part III, Part IV-A, Part IV-B,
Delhi, 1966.

Census of India, 1961, Vol. XI, Mysore, Part II-A, General Population
Tables.

Economic Development of Mysore, 1956-1969, Bureau of Economics
and Statistics, 1970.

Epigraphia Carnatica, Vol. V, Part I, 1902.

Do ,, Vol. II, 1923.

(Inscriptions at Sravana-Belgola—Revised Edition).

Epigraphia Carnatica, Vol. XV, 1943.

First, Second and Third Five-Year Plans, Mysore State.

Fourth Five-Year Plan (1969-74)—Policy and Programme, 1970.

Guide to and a Directory of Hassan, A Souvenir, 1939.

Hand-Book of Agriculture, National Council of Applied Economic
Research, New Delhi.

Hand-Book on Industries, Hassan District, 1962.

Hand-Book of Animal Husbandry, National Council of Economic
Research, New Delhi.

Hand-Book of Commercial Information of Mysore, 1941, State Depart-
ment of Industries and Commerce.

Hassan Cattle Fair and Exhibition Souvenir, 1939.

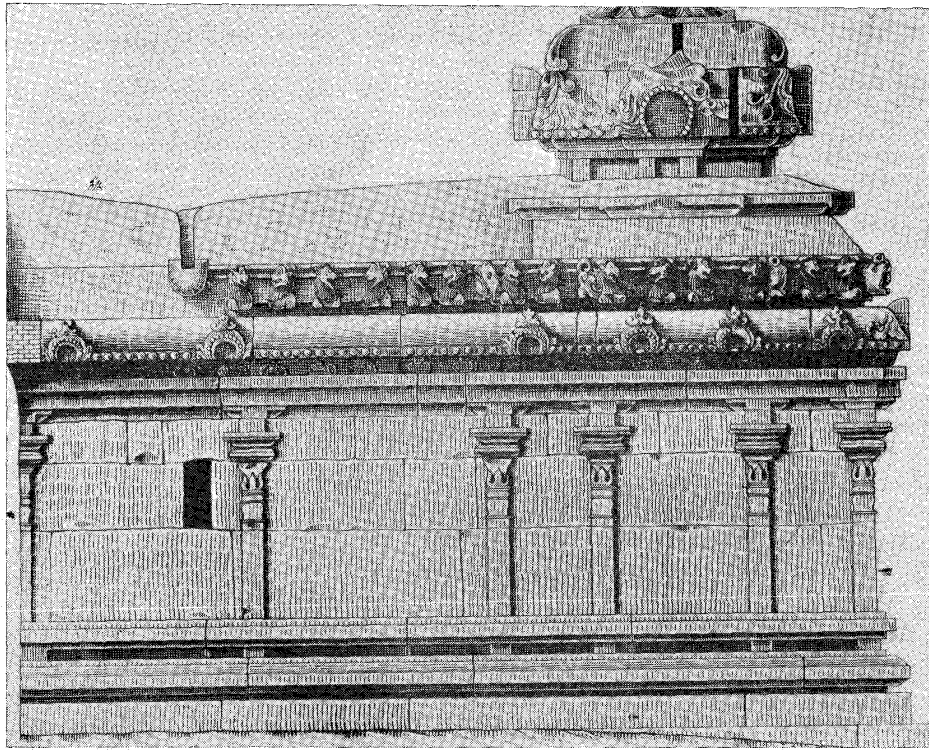
Inscriptions at Sravana-Belgola, 1889.

Journal of the Mysore University, Vol. No. XXVII, September 1969.

Livestock Census, Mysore State, 1961 and 1966.

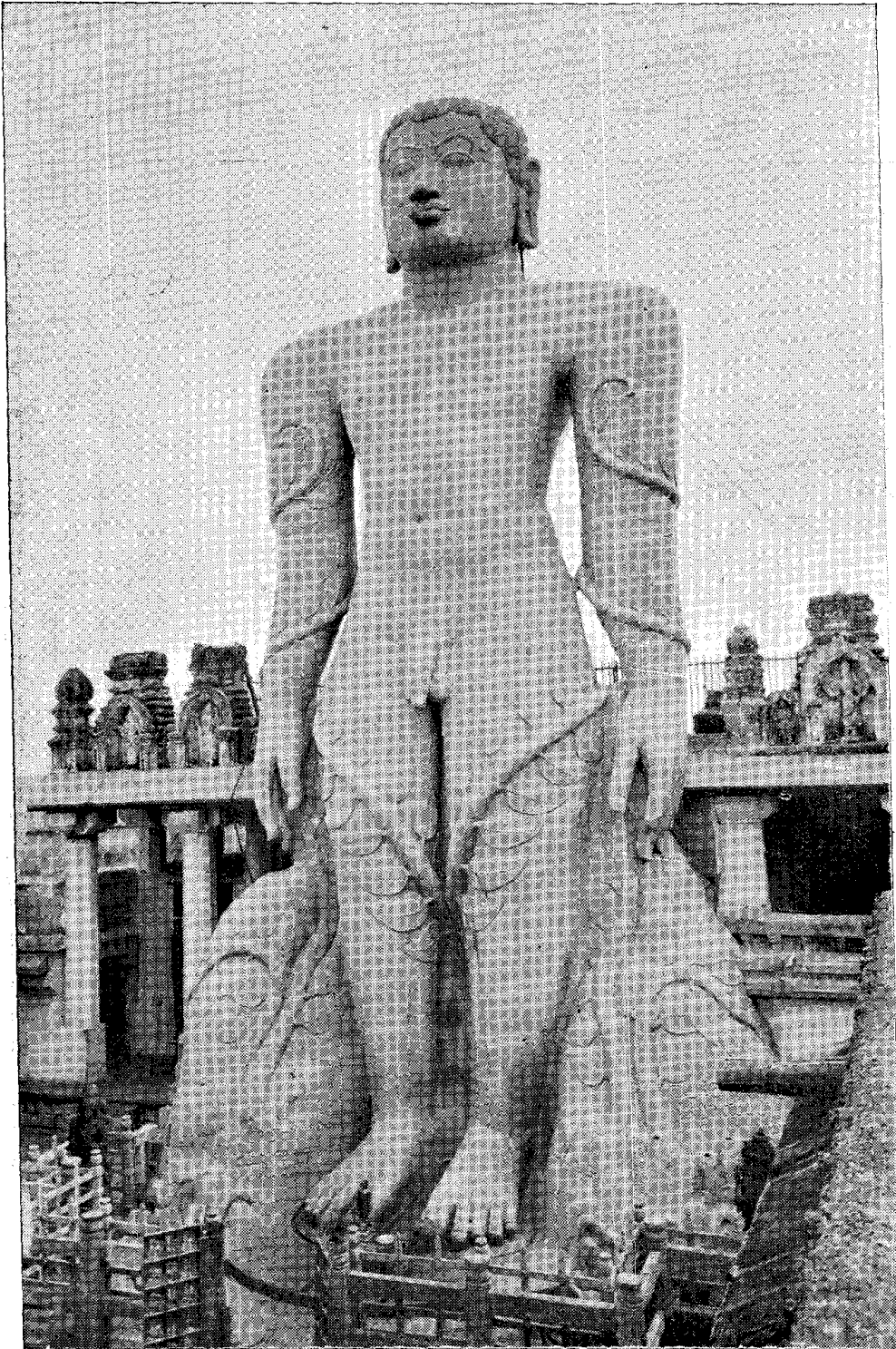
Mineral Resources of Hassan, Mandya and Mysore Districts, Bulletin
No. 28, Department of Mines and Geology, 1968.

- Mysore Revenue Survey Manual.
- Mysore State in Maps, Department of Statistics, 1959 and 1966.
- Mysooru Rajya*, 1956.
- Papers presented to the Seminar on the History of Vijayanagar Empire, held at Hospet in 1970, and to the Seminar on the History of the Hoysalas held at Mysore in 1970.
- Provincial Gazetteers of India, Mysore State, 1908.
- Report of the Censuses of 1931 and 1941 of Mysore State.
- Report of the Committee for Revision of Land Revenue System, 1950.
- Reports of the Election Commission in respect of General Elections of 1957, 1962 and 1967.
- Report of the Mysore Tenancy Agricultural Land Laws Committee, 1958.
- Report on the Census of Irrigation Wells in Mysore State, 1968-69, Bureau of Economic and Statistics.
- Revision Settlement Reports of Zones II, VII, XVI, 1964.
- Road Statistics in Mysore State, Parts I and II, 1969.
- Rural Communications Statistics in Mysore State—1969.
- Sample Survey of Road Traffic conducted in 1969-70 in Mysore State.
- Small-scale Industry Area Survey Report on Industrial Development Potentialities of Hassan District, Small Industries Service Institute, Bangalore, 1967.
- Souvenir of the Malnad Technical Education Society (R), Hassan, 1963.
- Statistics of Major Bridges in Mysore State, 1969.
- Techno-Economic Survey of Mysore, National Council of Applied Economic Research, New Delhi, 1965.
- Third Five-Year Plan of Hassan District, 1965.
- Village Survey Monograph, Gorur, Hassan taluk, 1961.
- Village Survey Monograph, Kurubathur, Manjarabad taluk, Hassan District, 1961.
-

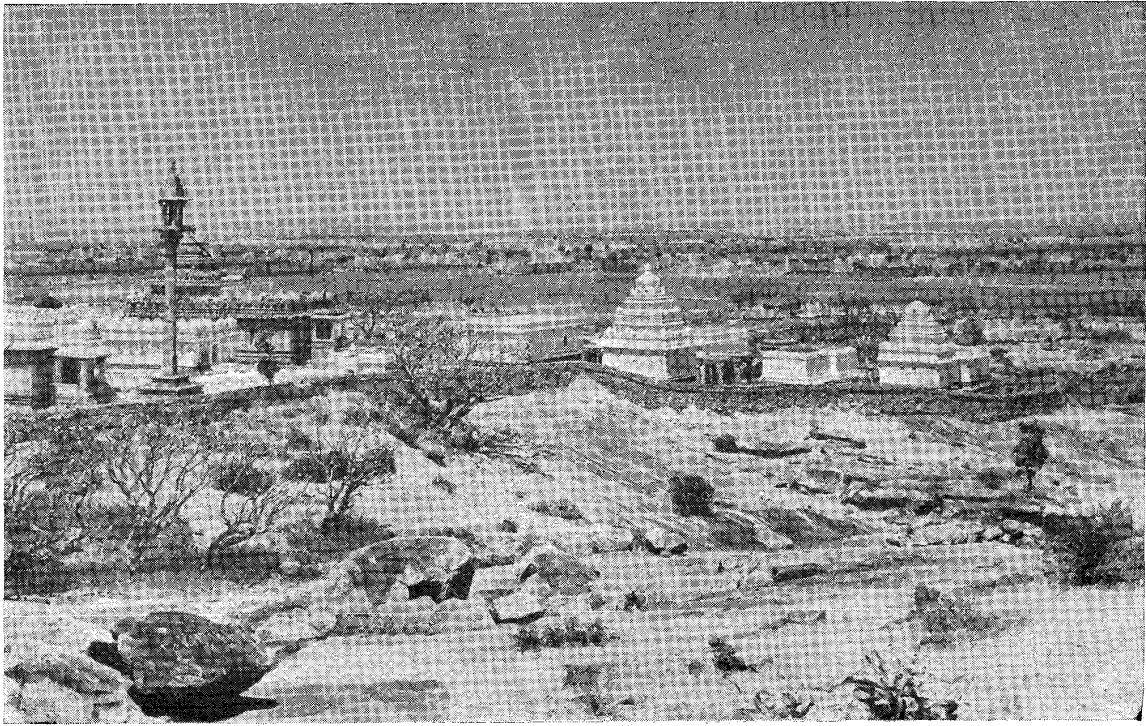


East side view of Chandragupta Basti (Jaina temple) on Chandragiri, Shravanabelgola.

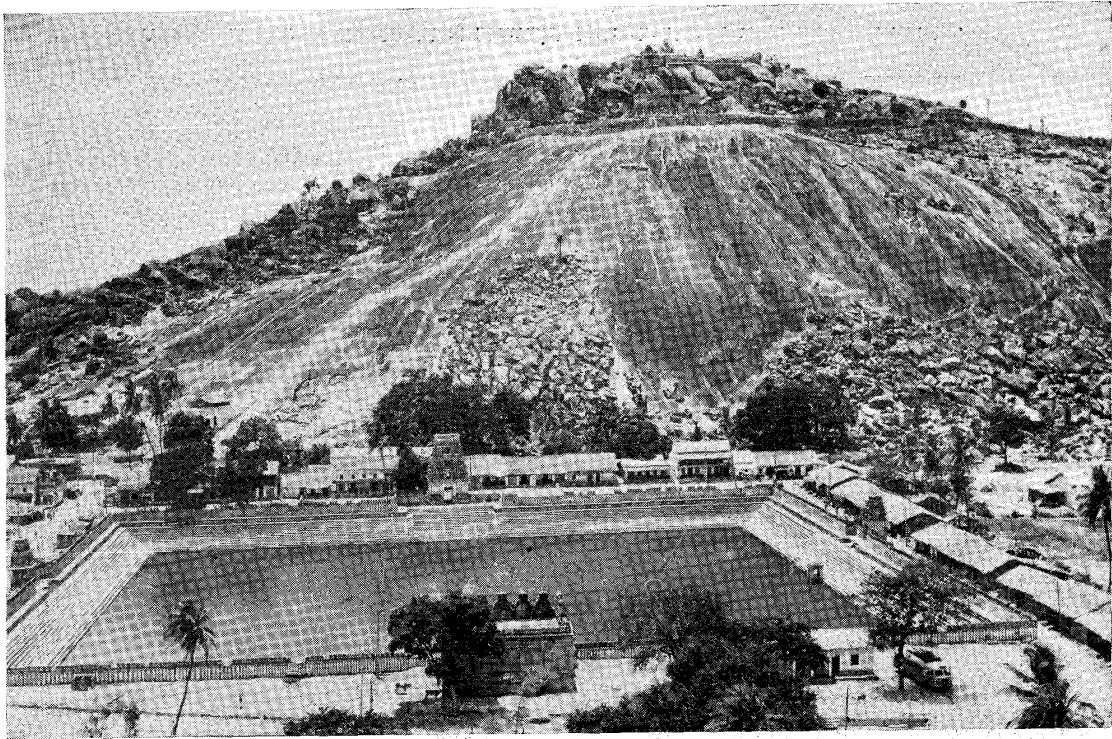
(By courtesy of the Directorate of Archaeology in Mysore, Mysore.)



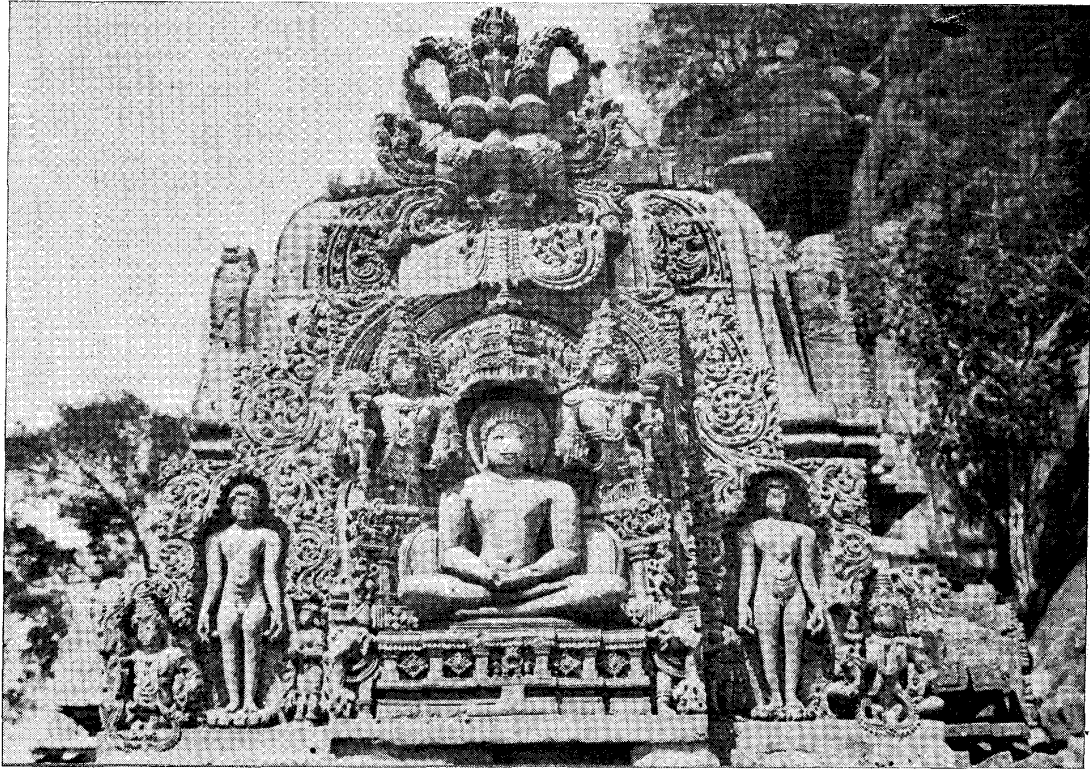
The colossal statue of Gommateshwara, about 57 feet in height, on Indragiri, Shravanabelgola.



A sectional view of Chandragiri at Shravanabelgola showing some of the Jain temples.



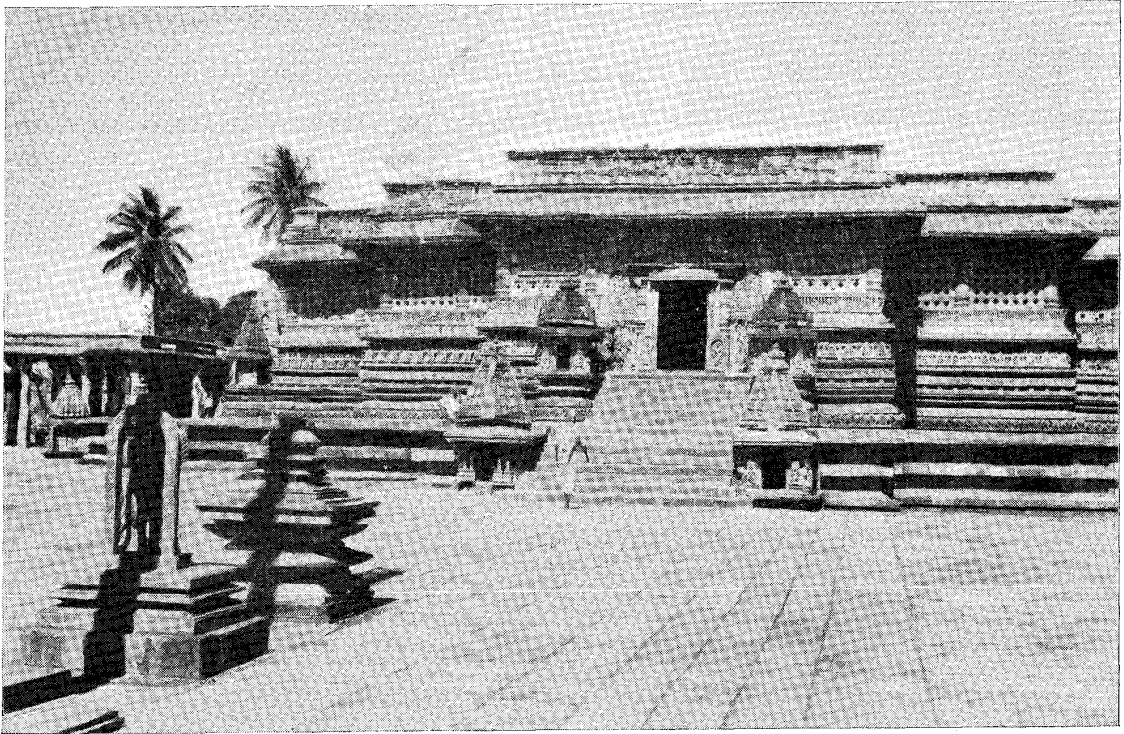
A general view of Indragiri (or Vindhyagiri) at Shravanabelgola. In the foreground is Belgola or 'white pond' which signifies the name of the place.



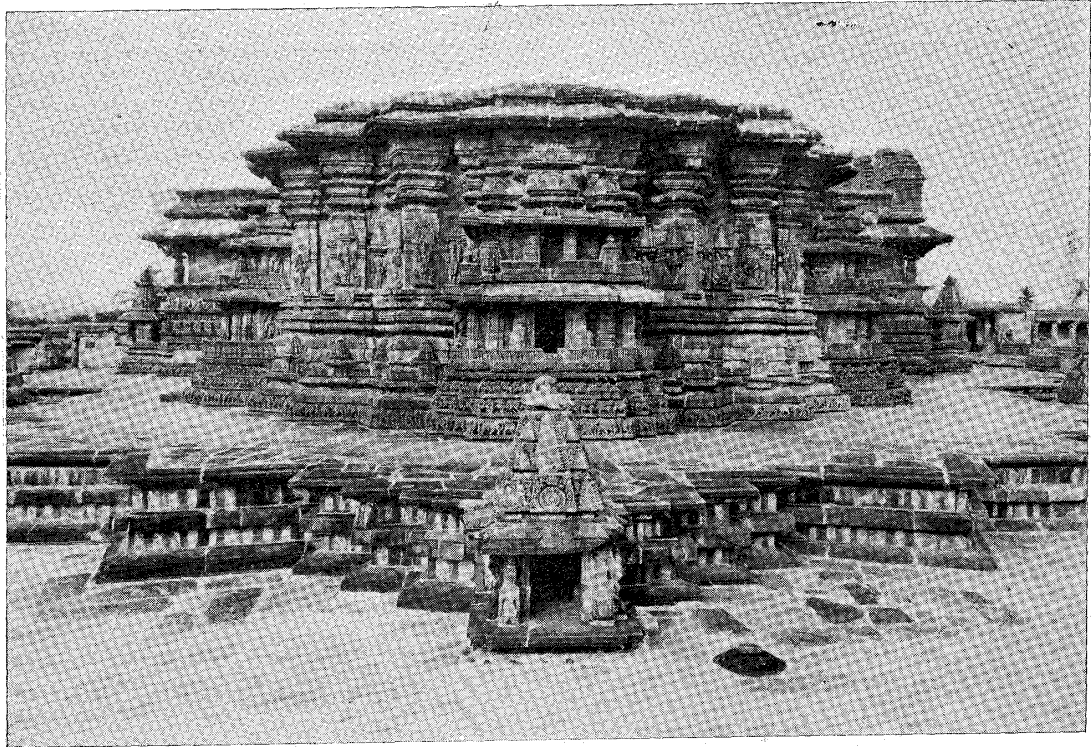
Carvings on the *Gopura* of Akkana Basti (temple) at Shravanabelgola.



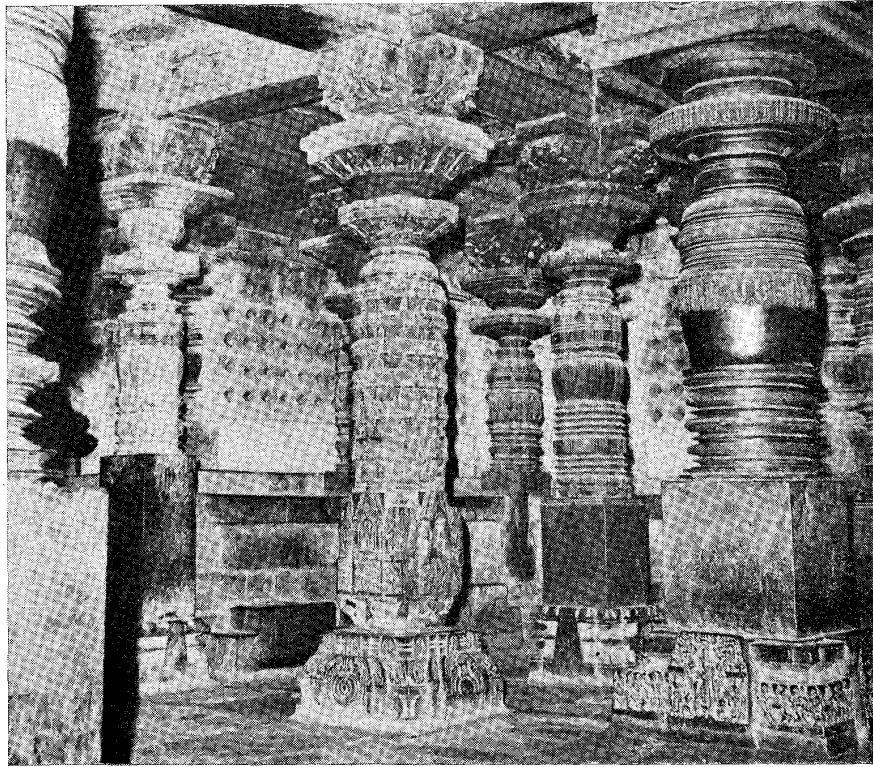
A fine figure of Kolalu (flute) Gopalakrishna at Devigere in Hassan town. Some of the features of this image suggest that this ante-dates the sculptural works at Belur and Halebid.



Front view of the world-renowned Channakeshava temple at Belur.



Rear view of the Channakeshava temple, Belur.
(By courtesy of the Directorate of Archaeology in Mysore, Mysore.)

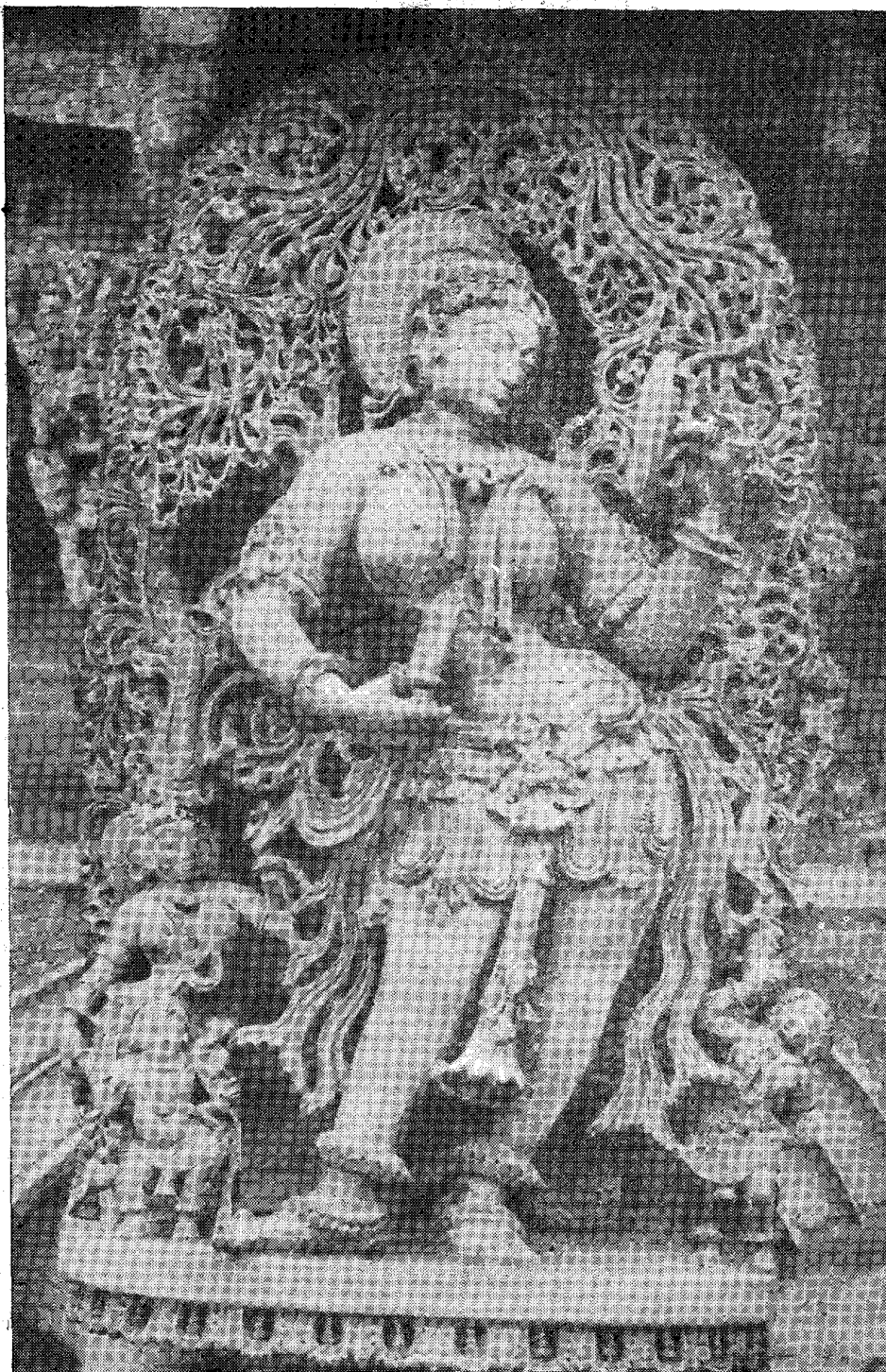


Richly carved stone-pillars inside the Channakeshava temple, Belur.



**Image of Sala, founder of the Hoysala dynasty, killing a tiger, in the
Channakeshava temple, Belur.**

(By courtesy of the Directorate of Archaeology in Mysore, Mysore.)



The Beauty and the Mirror—one of the *madanike* (bracket) figures in the Channakeshava temple, Belur.

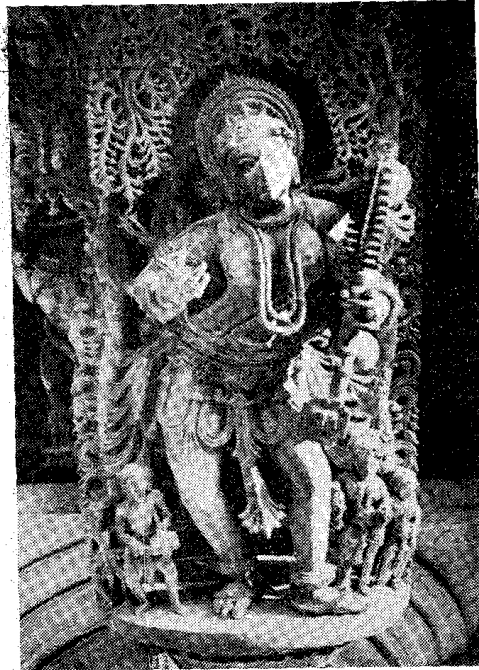
1



3



2

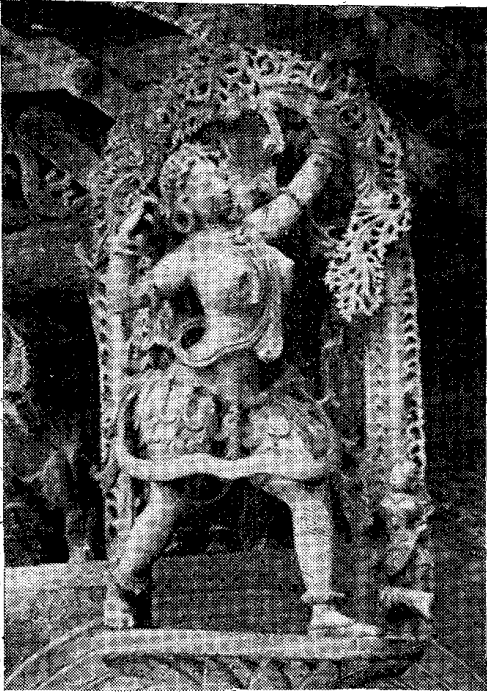


4

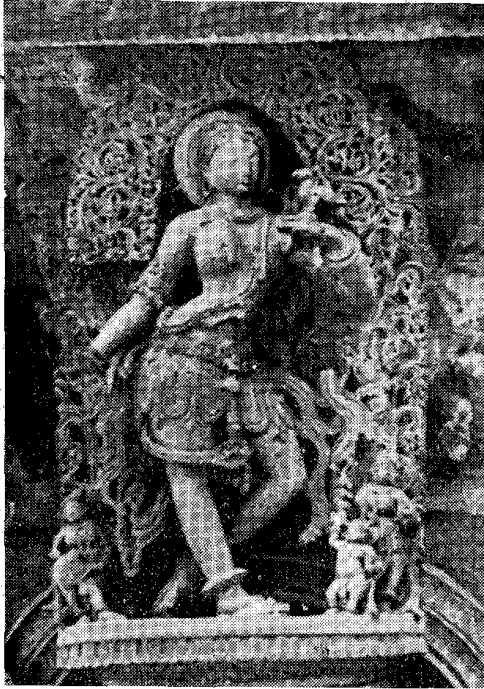


(1) A *madanike* figure in the *abhinaya* (gesture) pose, (2) A lady holding the Veena, (3) A beauty being harassed by a monkey and (4) A beauty getting a ring put on her left toe, in the Channakeshava temple, Belur.

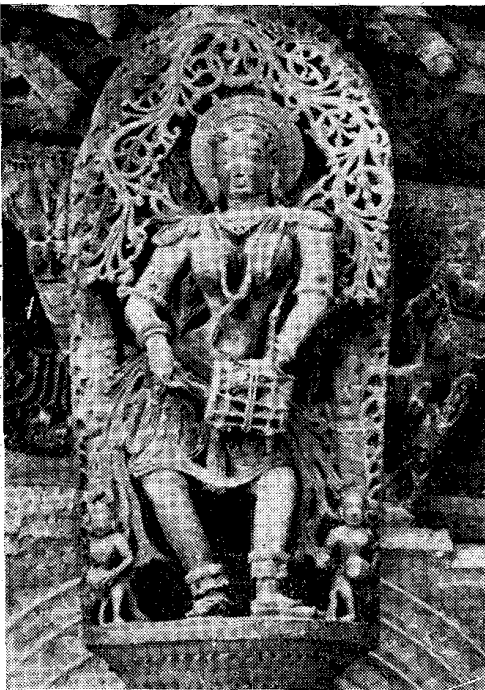
1



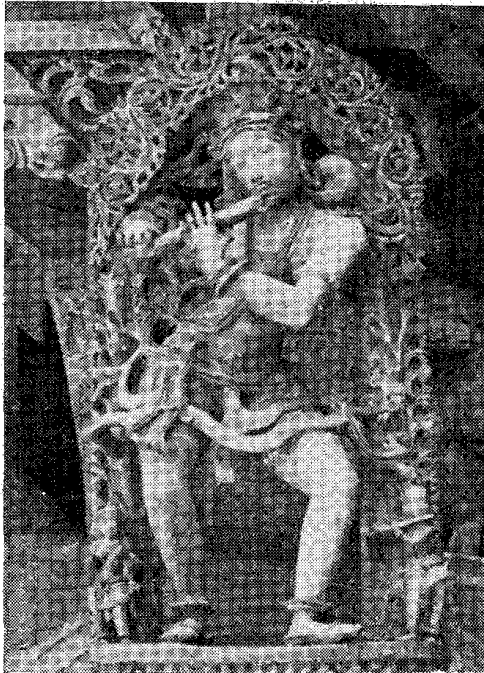
2



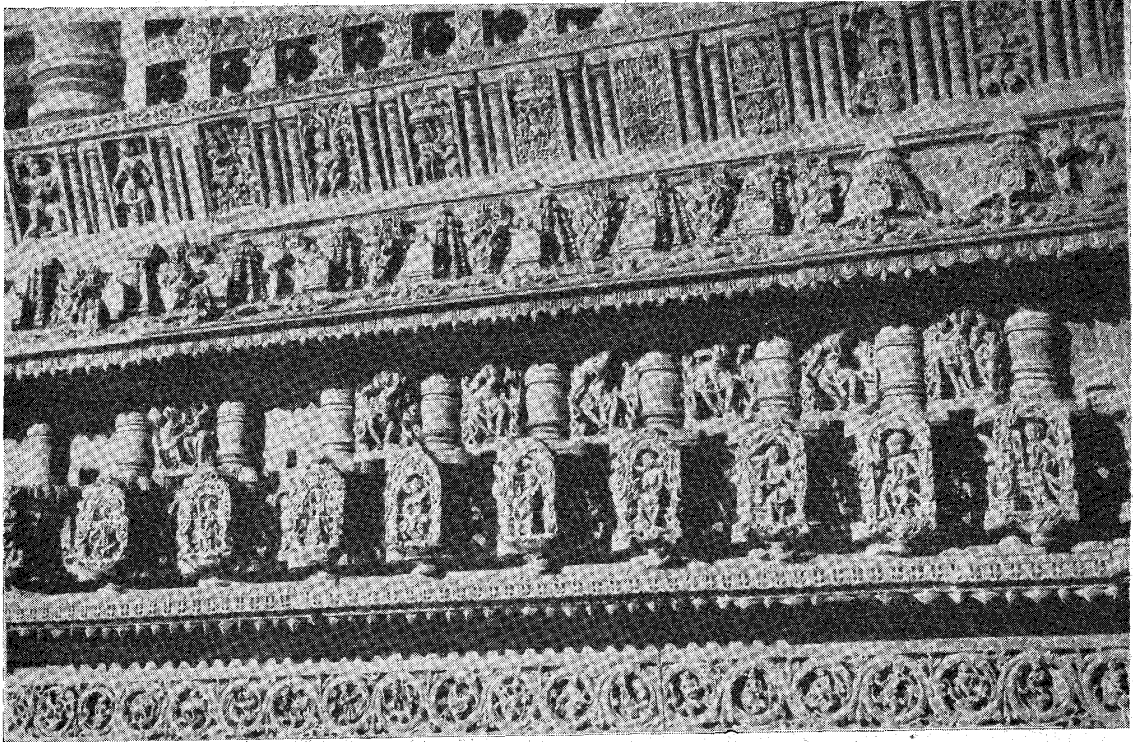
3



4



(1) A huntress, (2) A beauty with her pet parrot on her fore-arm, (3) A drum dancer and (4) A flute player, in the Channakeshava temple, Belur.



Exquisite and intricate carvings in the Channakeshava temple, Belur.



A corner view of the Channakeshava temple, Belur, with its graceful carvings.

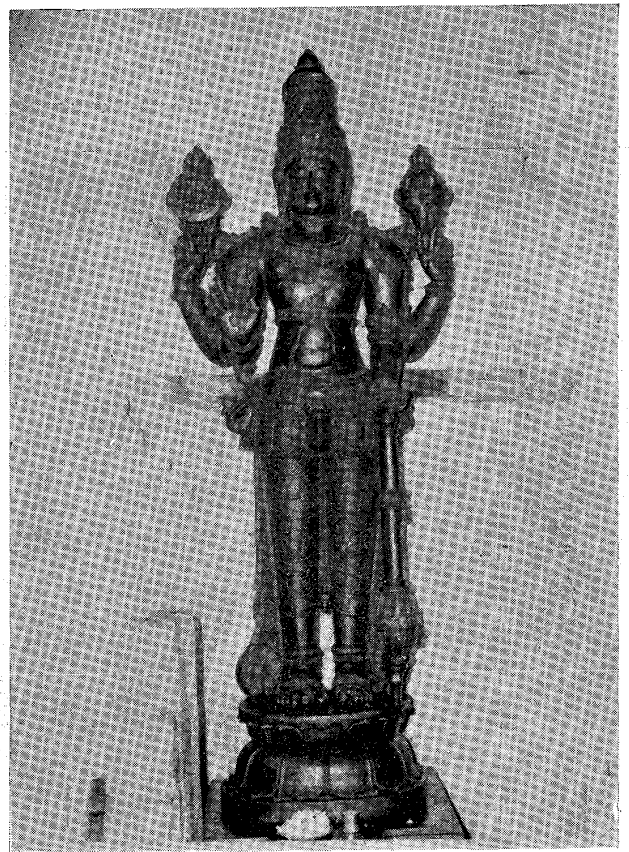
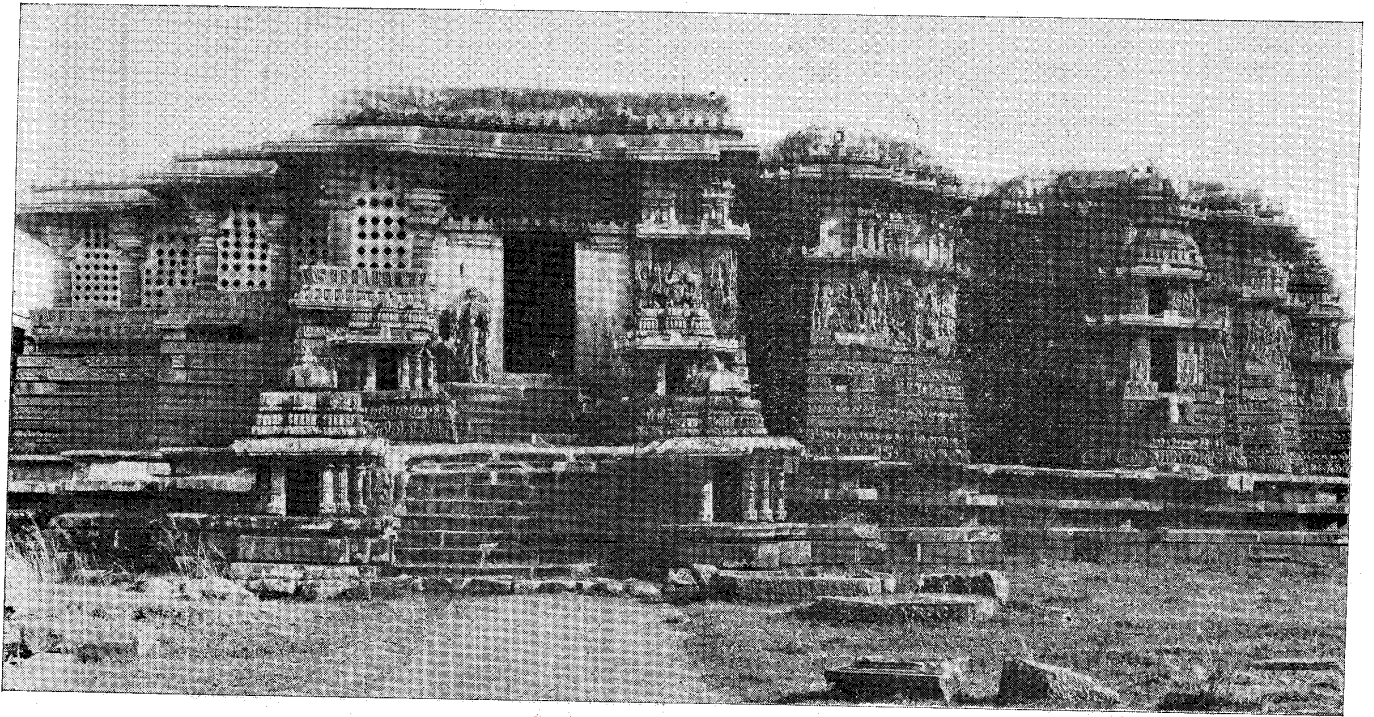
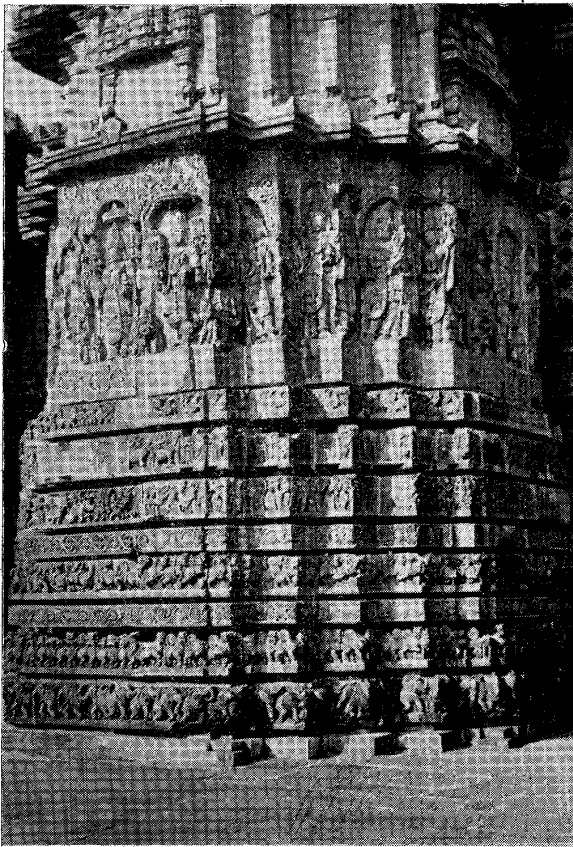


Image of Allalanatha at Kondajji in Hassan taluk. It is about 14 feet high from the *panivatta*.



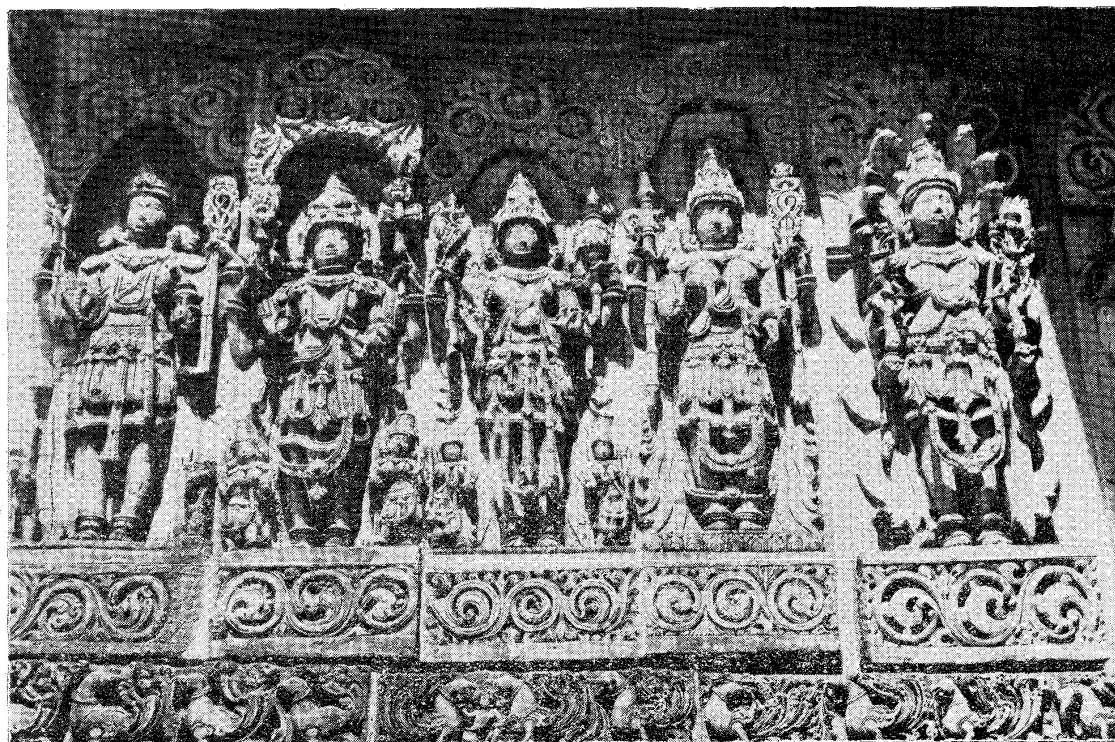
Front view of the world-famous Hoysaleswara temple at Halebidu.
(By courtesy of the Directorate of Archaeology in Mysore, Mysore.)



Delicate carvings on the walls of the Hoysaleswara temple, Halebid.



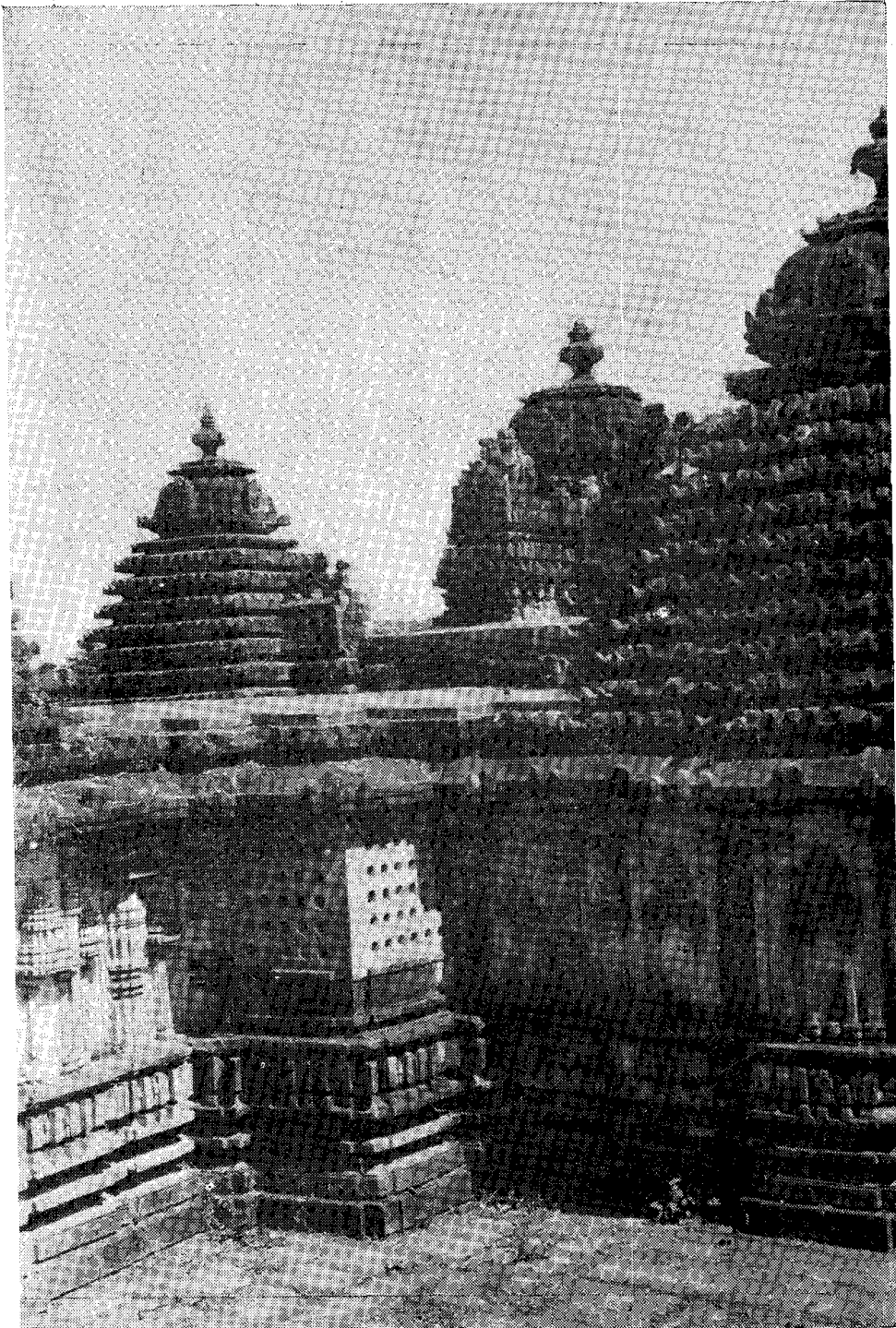
An excellently executed figure of a dancing goddess in the Hoysaleswara temple at Halebid.



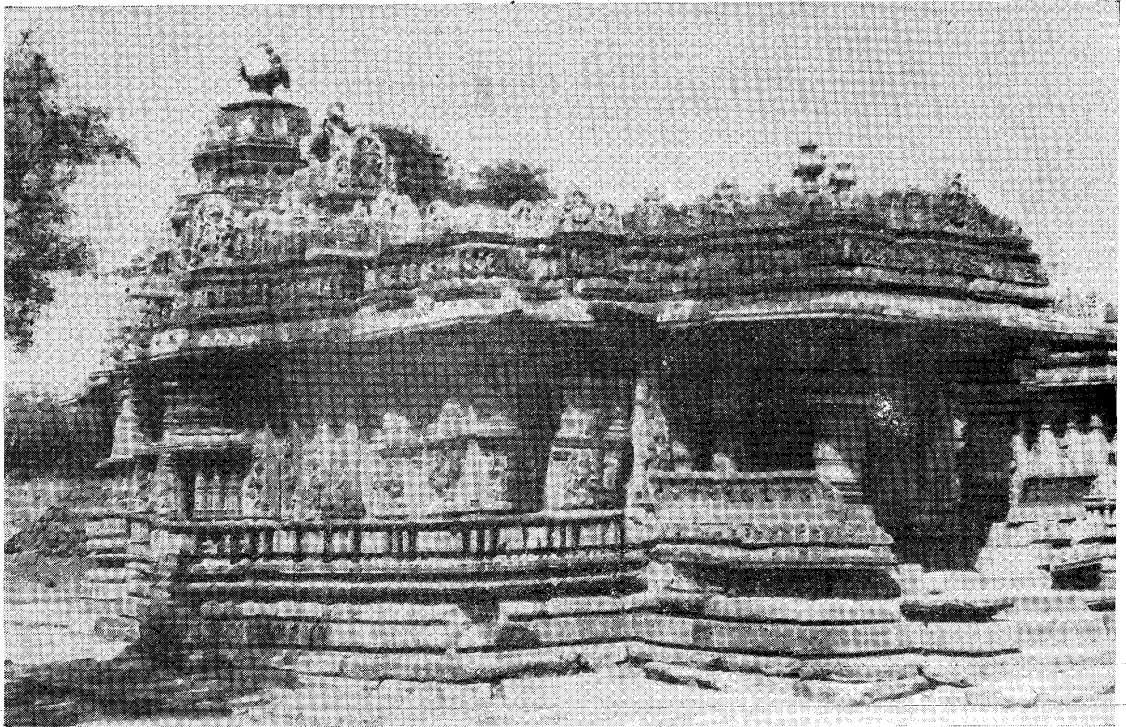
Another example of elegant Hoysala craftsmanship at the Hoysaleswara temple, Halebid.



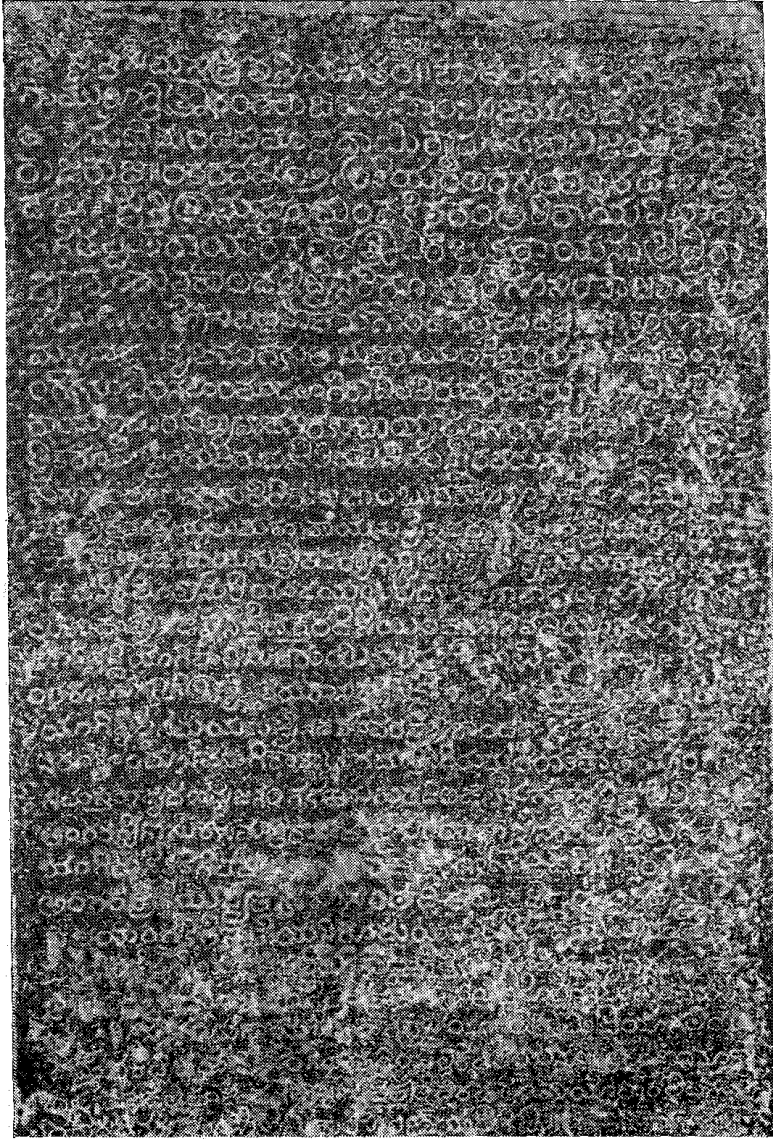
*Mukhamantapa of the Ishwara temple at Arsikere.
(By courtesy of the Directorate of Archaeology in Mysore Mysore.)*



A sectional view of the Lakshmi Devi temp'e at Doddagaddavalli in Hassan taluk.



The Channakeshava temple at Mosale in Hassan taluk.



This lithic record in Kannada prose, of Bukka Raya I, Vijayanagara king, dated in the year 1368 A. D., found at Shravanabelgola, speaks of a wholesome reconciliation between followers of Jaina and Srivaishnava faiths, brought about personally by the king himself who, taking the hand of representatives of one community and placing it in the hand of those of the other, declared that there was no difference between the two.....they were one (body) and must not be viewed as different.....(*E. C. II*, 1923, Inscription 344 (136).

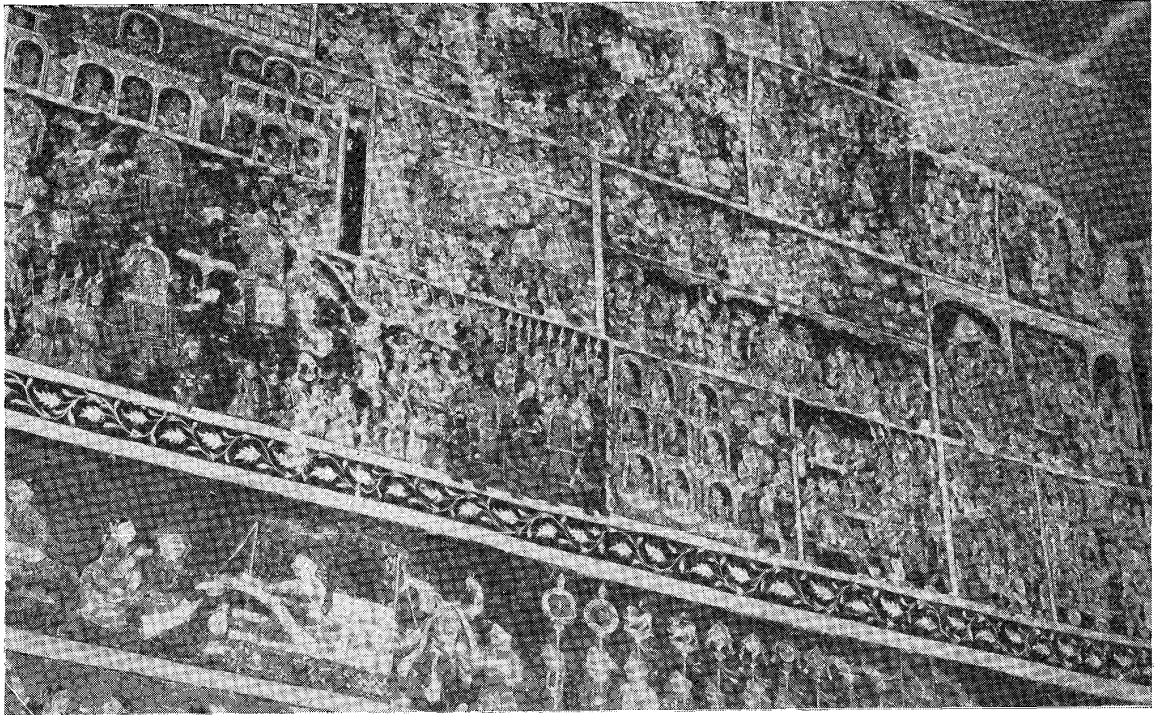
(By courtesy of the Directorate of Archaeology in Mysore, Mysore.)

ಯಂತ್ರವಾಸ್ತುಮು ಪಾಸರಿತಿವಇರಿಬಿಡಿರಿ
 ವಿಕಾಂತಿಸಿಗಾಚಾರ್ತಾ ಬುದ್ಧ ಇಲಿಪ್ರಮಾಸಾಪದವಾಕಲೆಲಿಸೈಯ್ಯಾಇಕಾಃ ಶ್ರೀಶಂ
 ಪ್ರೀಲೆದಾ ಜೈನಶಾಸ್ತ್ರಸಮಿಲಿಕಂಪಲೆಮಿಮಯಕಾಃನಾಯಂಜವಿಡತಾರುವಾಂ
 ವಿಶ್ವಲಂಠಿಶಿವೇಶ್ವರವಾ ||

(By courtesy of the Directorate of Archaeology in Mysore, Mysore.)

Invocatory verse in Inscription No. Belur 3, dated in the year 1397 A. D. (i.e., of the Vijayanagara times), found in the Channakeshava temple at Belur (*E. C. V, Part I, 1902*), which is an eloquent testimony of the religious catholicity of those times. Its English translation is as follows :

He whom the Shaivas worship as Shiva, the Vedantins as Brahma, the Buddhists as the Buddha, the Naiyayikas skilled in proof as Kartta, the followers of the Jaina Shasana as Arha, the Mimamsakas as Karma,—that God Keshava ever grant your desires.



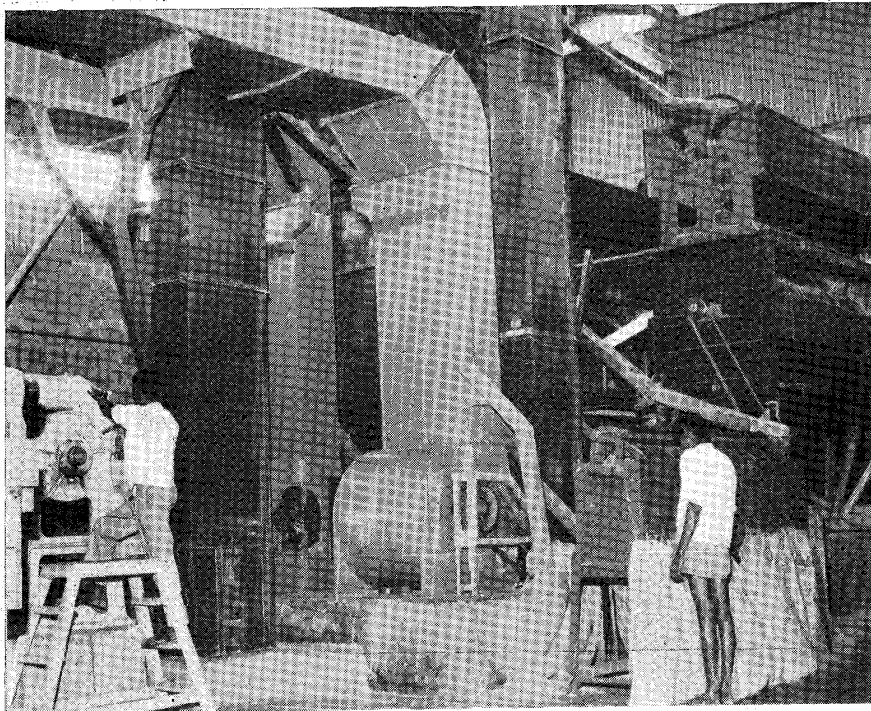
A fine wall-painting in the Jaina Matha at Shravanabelgola.



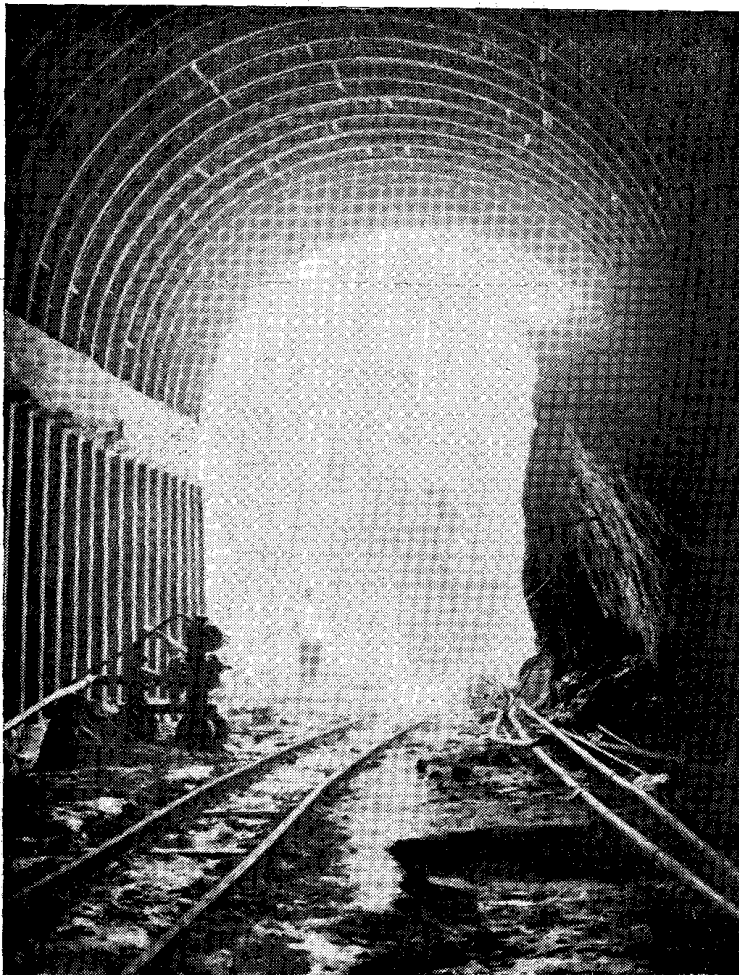
Another interesting wall-painting in the Jain Matha at Shravanabelgola.



A *Jatra* scene at Ramanathapura, a well-known centre of pilgrimage on the bank of the Cauvery, in Arkalgud taluk.



An inside view of the Kothari Coffee Curing Works near Hassan town.

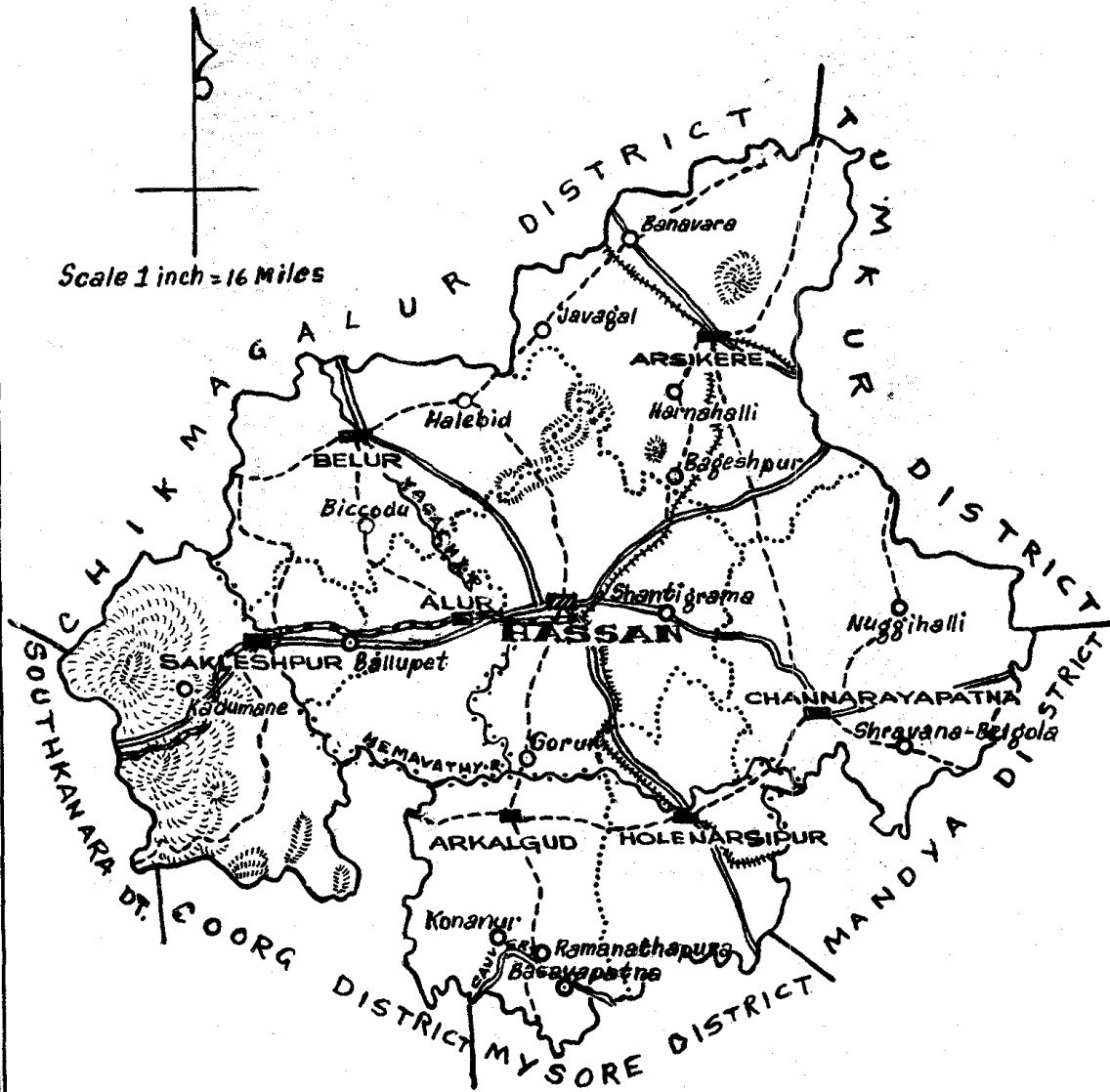


Inside view of a tunnel under construction on the
Hassan-Mangalore railway line.



Front view of the imposing Government College building at Hassan.

HASSAN DISTRICT



REFERENCES

1	District Boundary	---
2	District Headquarters	▨
3	Taluk Boundary	---
4	Taluk Headquarters	■
5	Other Places	○
6	State Highways	---
7	Important Major District Roads	---
8	Existing Metre Gauge Railway Lines	▬▬▬▬
9	Hassan-Mangalore Metre Gauge Railway Line under Construction	▬▬▬▬
10	Hills	⊙
11	Rivers	~

1971

P. A. Kembhavi

27/12/71

(P.A.KEMBHAVI)

For Director of Survey Settlement
and Land Records in Mysore
Bangalore.

Prepared by M. Dasappa
Compared by G.K. Gopal.

